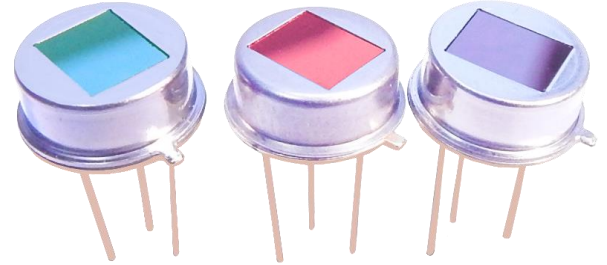


# Thin Film Pyroelectric Flame Sensor

## Introduction

The Pyreos thin film pyroelectric flame detectors offer exceptionally high responsivity, a wide field of view of typically 100° (\*subject to filter band pass specification) and class leading rapid recovery from thermal and electrical shocks (<1 second downtime). This sensor has excellent signal to noise at the signature 8-10 Hz flicker range of a flame, and can provide accurate discrimination of flame sources in triple IR flame detection systems. The internal CMOS Op-Amp provides enhanced stability and reliability. It has an industry standard pin-out and voltage mode output signal.



### Sensor Characteristics

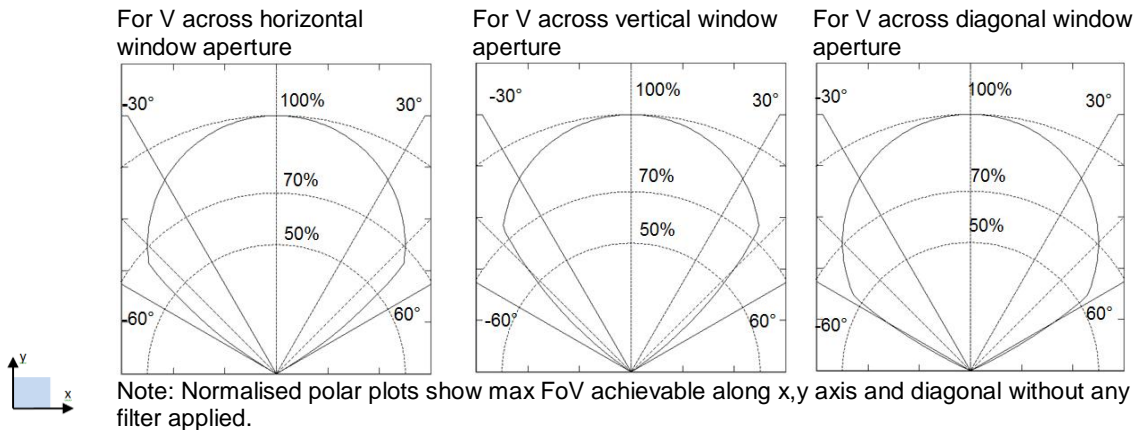
Filter aperture	5.2 mm x 4.2 mm
Element size	1000 μm x 1000 μm
Package	TO39
Responsivity <sup>1</sup>	150,000 V/W
D* <sup>1</sup>	3.5 x 10 <sup>8</sup> cm√Hz/ W
Noise <sup>1</sup>	Mean 70 μV√Hz
Field of View	Typical 100° <sup>2</sup>

<sup>1</sup>10 Hz, 500 K, room temperature, without window and optics  
<sup>2</sup>With reference to filter used in PY0573

### Electrical Characteristics

Max. Voltage (+V)	8.0 V
Min. Voltage (+V)	2.7 V
Output voltage normalised around mid-rail	
Microphonics	S <sub>vib</sub> ~2 μV/√Hz at 10 Hz
Time Constant	~12 ms
Operating Temperature	-40 to +85 °C
Storage Temperature	-40 to +110 °C
Op-Amp with 10 GΩ feedback resistor	
Filter	As per Filters Available table

## Frequency Characteristics



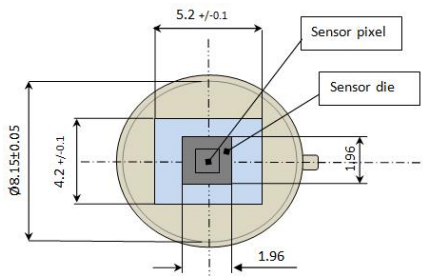
Please note: the information contained in this document is subject to change without further notification. Pyreos reserves the right to alter the performance and any resulting specification. Pyreos may choose not to supply any engineering sample devices as a commercial product. No responsibility is accepted for any consequential loss incurred. Pyreos Ltd, SMC, West Mains Road, Edinburgh EH9 3JF, UK. Tel: +441316507009, [www.pyreos.com](http://www.pyreos.com)

**Order Information**

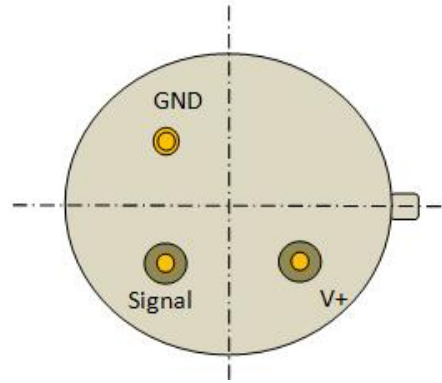
Please quote PY-ITV-FLAME-TO39(2+1) and your desired filter combination or quote specific part number PYXXXX as per filter table.

Contact: [sales@pyreos.com](mailto:sales@pyreos.com)

**Package Information**

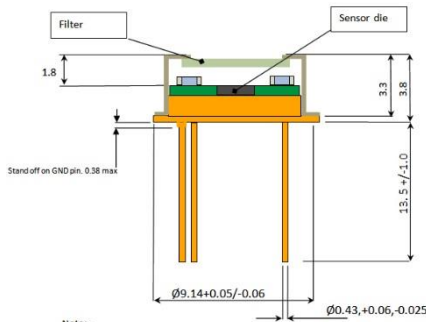


Top View



Bottom View

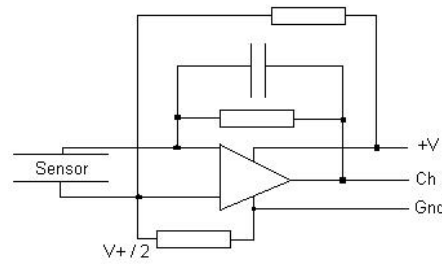
**Filter window size**



Notes:-  
Dimensions in mm (Not to scale)  
Dimensions are typical, unless tol stated.

Package dimensions

**Pin compatible with leading brands**



Voltage mode output

**Filters Available**

Part number	PY1580	PY0575	PY0573	PY1600	PY0574	PY1601	PY0576
Filter name	3.38 $\mu\text{m}$ bandpass	3.91 $\mu\text{m}$ bandpass	4.35 $\mu\text{m}$ bandpass	4.48 $\mu\text{m}$ bandpass	4.64 $\mu\text{m}$ band pass	5.0 $\mu\text{m}$ cut on	5.5 $\mu\text{m}$ cut on
Cut on wavelength typical ( $\mu\text{m}$ )	3.295	3.865	4.05	4.17	4.55	5.0	5.5
Cut off wavelength typical ( $\mu\text{m}$ )	3.475	3.955	4.65	4.79	4.73	-	-

Please note: the information contained in this document is subject to change without further notification. Pyreos reserves the right to alter the performance and any resulting specification. Pyreos may choose not to supply any engineering sample devices as a commercial product. No responsibility is accepted for any consequential loss incurred. Pyreos Ltd, SMC, West Mains Road, Edinburgh EH9 3JF, UK. Tel: +441316507009, [www.pyreos.com](http://www.pyreos.com)